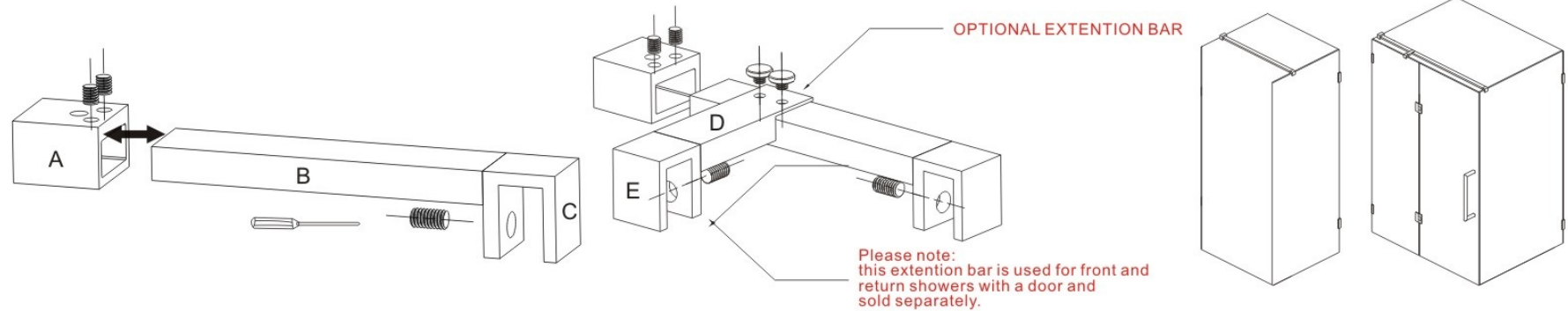


Glass Stabilizer Installation

(to suit TPRW round bar Stabilizer and TPSW Square bar Stabilizer)



OPTIONAL EXTENSION BAR

Please note: this extension bar is used for front and return showers with a door and sold separately.

<p>Step1</p> <p>Mark where you want to mount into the wall.</p>	<p>Step2</p> <p>Before you drill the hole make sure there is no wires or water pipes e.t.c.behind.</p>	<p>Step3</p> <p>Put silicon in the hole and for water proofing, tap the plug in gently with a rubber mallet or similar.</p>	<p>Step4</p> <p>Screw the wall bracket into the plug.</p>	<p>Step5</p> <p>Cut the pipe to the size needed according to your glass to wall distance.</p>
<p>Step6</p> <p>Slide stabilizer pipe into the sleeve and tighten screws, once screws are tight and you are satisfied with the length, drill hole into the pipe and attached the safety pop rivet.</p>	<p>Step7</p> <p>Tighten screw gently onto the glass, make sure the plastic packer on the screw hasn't fell out while you are putting the the bracket onto the glass. Make sure the the plastic is inserted between the glass and the bracket so glass does not come in contact with the bracket.</p>	<p>POP RIVET USAGE</p> <p>1. Drill hole and select correct hozzete. Open tool and place stem in tool.</p> <p>2. Place rivet in hole and squeeze plier once or twice until stem snaps.</p>		<p>Optional Front Panel extension bar</p> <p>Put the Front Panel extension bar on the long bar, adjust and pop rivet onto the main bar.</p>

Product Code:TPRW+TPSW
Manufacturer code:3615

